

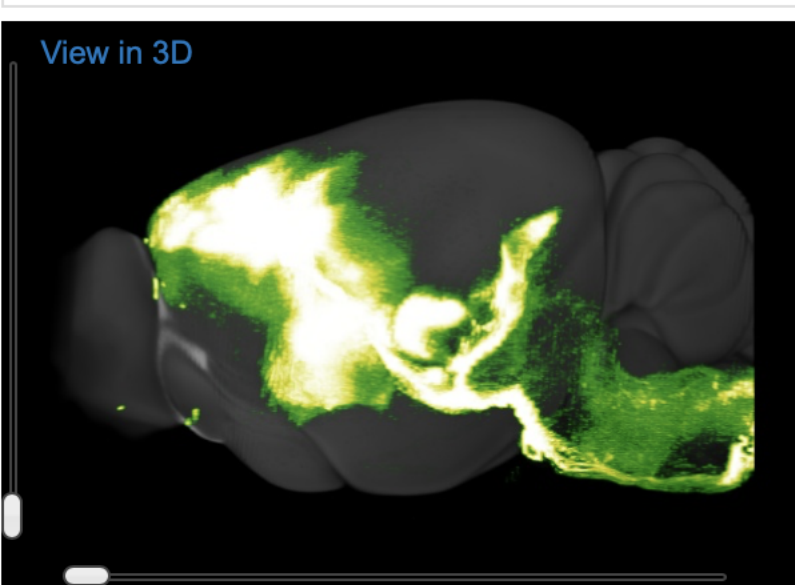
Experiment Summary

| | |
|--------------|-----------|
| Experiment | 100141780 |
| Mouse Strain | C57BL/6J |
| Tracer Type | EGFP |

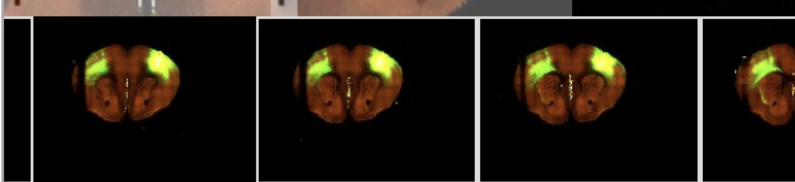
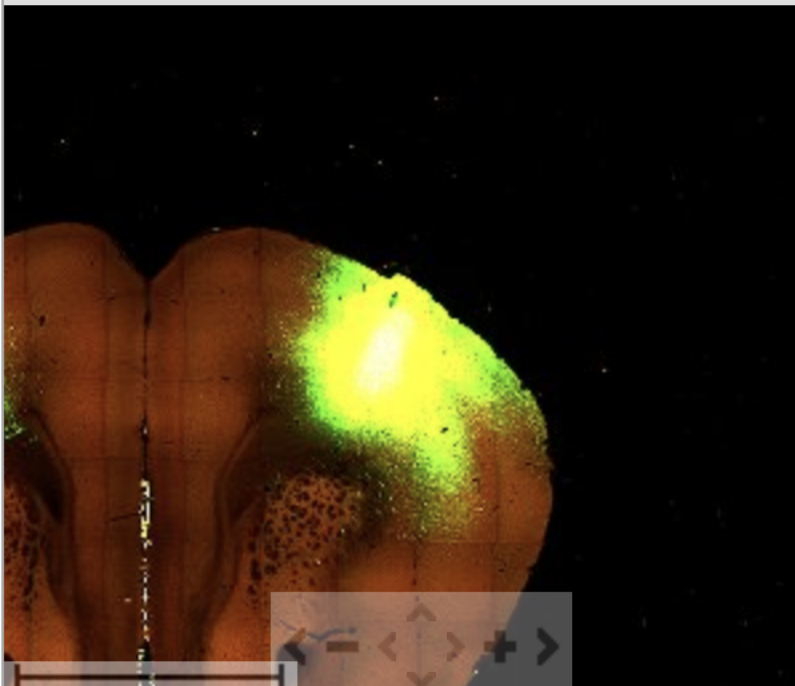
AAV Injection Summary

| | |
|-------------------------------|---|
| Coords. (AP,ML,DV, \angle) | Bregma(1.1, 2, 0.3, 20) Bregma(1.1, 2, 0.75, 20) |
| Injection Volume | 0.18 mm ³ |

MOp



serial two-photon tomography



Projection Volume

0.0050 / 13.8800 mm³

search for structures

| Structure | | Left Hemisphere | Right Hemisphere | |
|-------------|--------|-----------------|------------------|---------|
| - grey | 7.0080 | | | 12.9546 |
| - Isocortex | 3.4878 | | | 6.8667 |
| + FRP | 0.0203 | | | 0.0652 |
| + MOp | 1.4793 | | | 2.1817 |
| + MOs | 0.6751 | | | 1.7120 |
| + SSp-n | 0.0693 | | | 0.1939 |
| + SSp-bfd | 0.0101 | | | 0.0308 |
| + SSp-m | 0.4948 | | | 1.3393 |
| + SSp-ul | 0.0689 | | | 0.2422 |
| + SSp-un | 0.0132 | | | 0.0836 |
| + SSs | 0.3208 | | | 0.6578 |
| + GU | 0.0708 | | | 0.0486 |
| + VISC | 0.1065 | | | 0.1299 |
| + ACAv | 0.0087 | | | 0.0197 |
| + ORBI | 0.0160 | | | 0.0181 |
| + Ald | 0.0747 | | | 0.0949 |
| + Alp | 0.0215 | | | 0.0241 |
| + PERI | 0.0075 | | | 0.0024 |
| + ECT | 0.0174 | | | 0.0066 |
| + OLF | 0.0155 | | | 0.0075 |
| - HPF | 0.0063 | | | 0.0094 |
| IG | 0.0027 | | | 0.0054 |
| - CTXsp | 0.0123 | | | 0.0098 |
| + BLA | 0.0030 | | | 0.0053 |
| - STR | 2.2058 | | | 3.0266 |
| CP | 2.1452 | | | 2.9698 |
| ACB | 0.0200 | | | 0.0177 |
| FS | 0.0081 | | | 0.0044 |
| + CEA | 0.0120 | | | 0.0155 |
| - PAL | 0.0174 | | | 0.2397 |
| GPe | 0.0052 | | | 0.1233 |
| GPi | 0.0003 | | | 0.0741 |
| SI | 0.0049 | | | 0.0051 |
| - TH | 0.1154 | | | 1.0959 |
| VAL | 0.0259 | | | 0.1888 |
| VM | 0.0123 | | | 0.0729 |
| VPL | 0.0003 | | | 0.0445 |
| VPLpc | 0.0001 | | | 0.0064 |
| VPM | 0.0057 | | | 0.2189 |
| VPMpc | 0.0017 | | | 0.0133 |

This data is also available as [XML](#).